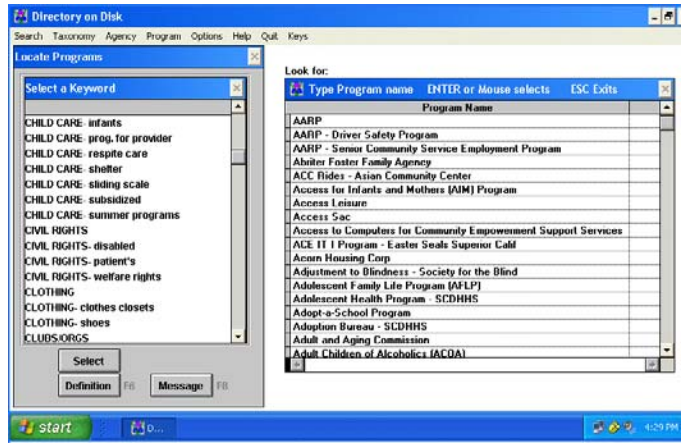
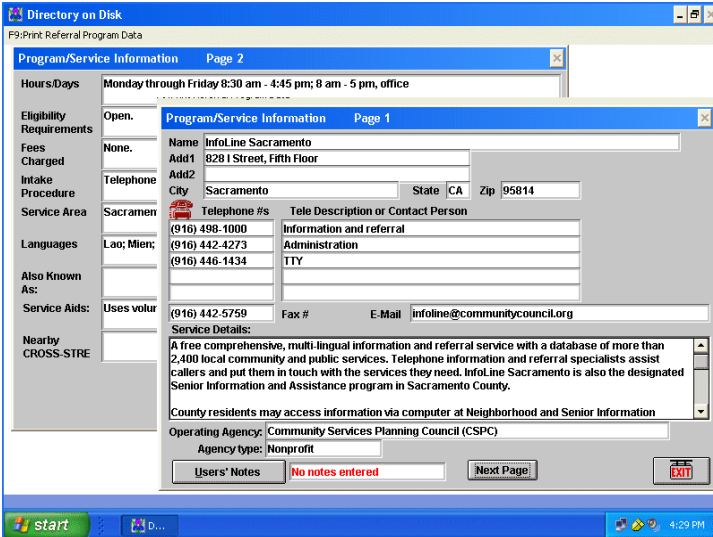


# About *Directory on Disk*

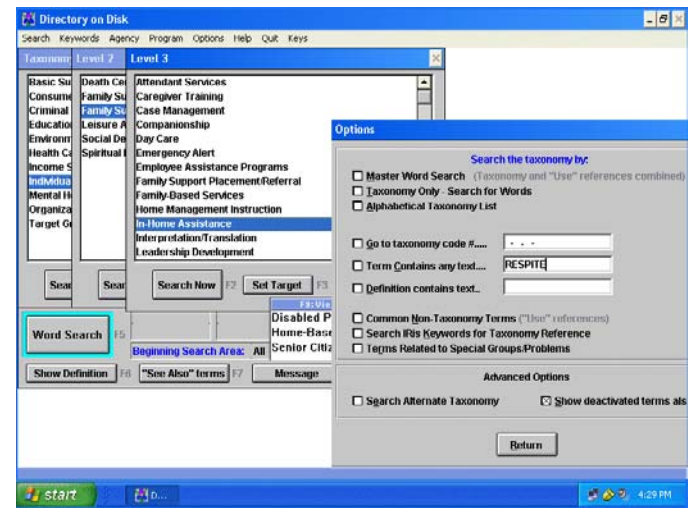
**Directory on Disk** is an electronic version of the **Community Services Directory** for your computer! It allows you to easily and quickly search the directory by using a keyword system or other menus. Programs and agencies are fully described. Information can be printed for clients.



Search by many methods: topic keywords, agency or program name, geographical areas, language spoken, ZIP code, target group, level of service, etc.



Screens showing community resource information.



Community Resource data is more current with the **Directory on Disk** program because it includes a one-year subscription to quarterly updates.

Minimum requirements are IBM 486 (DX266 PC), Microsoft Windows (version 3.1), 45MB hard drive space, and 16MB RAM. Program is read-only and works as a stand-alone client referral database. **Note:** Data files cannot be extracted or shared with other application programs or to make products, such as mailing labels.

**Directory on Disk** is available as a single license or mutli-licensed users (see chart below). Price includes main program, 4 full quarterly resource data updates, instruction sheets and a user's guide.

| LICENSED USERS | BASIC COST  | TAX      | MAILINGS | TOTAL      |
|----------------|-------------|----------|----------|------------|
| Single User    | \$ 189.95   | \$ 16.62 | \$ 10.00 | \$ 216.57  |
| 5 Users        | \$ 849.95   | \$ 74.37 | \$ 10.00 | \$ 934.32  |
| 10 Users       | \$ 1,449.95 | \$126.87 | \$ 10.00 | \$1,586.82 |

## Order **Directory on Disk** Today

2-1-1 Sacramento, 909 12<sup>th</sup> Street, Suite 200, Sacramento CA 95814, (916) 447-7063  
 Visit [www.211sacramento.org](http://www.211sacramento.org) (publications) for an [order form](#) to complete and mail in.